

Southpointe

& Marcellus Shale

Magazine

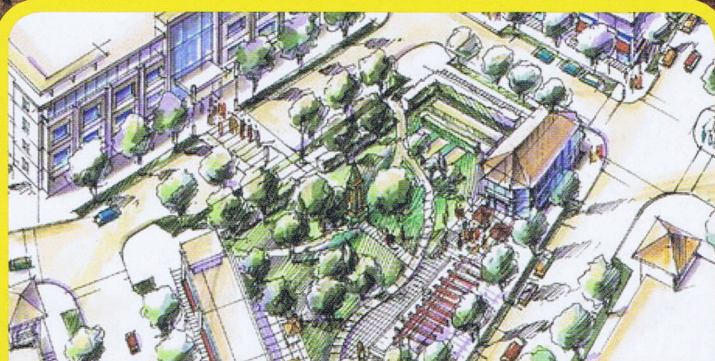
Trade Show Edition

Inside...

- Inside story on new Southpointe Town Center
- Hatch Mott MacDonald moves to Southpointe
- New pictures by Redford Photography



2012 Southpointe Chamber Board Members



New Town Center Plans Inside...





Range Opens Regional Headquarters in Southpointe

Marcellus Shale pioneer Range Resources strengthened its commitment to Washington County, opening the new regional headquarters building in Southpointe II.

Range has been operating in the Appalachian region for nearly 30 years, and has held office space in Southpointe since 2007. The natural gas production company outgrew three previous spaces in the business complex due to its rapidly increased production in Southwestern Pennsylvania Marcellus Shale operations. The new building has allowed Range to be one of the area's only natural gas producers to house its technical teams and key operations staff under one roof.

Located on Town Center Boulevard, the new LEED Certified (Leadership in Energy and Environmental Design) building features office space for more than 500 employees, a 215-seat auditorium, and Club Bistro, which is open to the public for breakfast and lunch.

With about 400 employees in Southpointe, and an additional 5,000 Pennsylvanians working for subcontractors and vendors each day in the Commonwealth, Range has plans to add on both employees and office space. The company has preliminary plans for building expansion on the 13-acre site in Southpointe II as it continually adds staff in Washington County, which the U.S. Department of Labor Statistics ranked third in the country in employment increase in 2011.



▲ Horizon Properties designed the 180,000 sq. ft. building that was constructed by P.J. Dick Corporation, making it one of the largest recent construction projects in Southwest PA.

